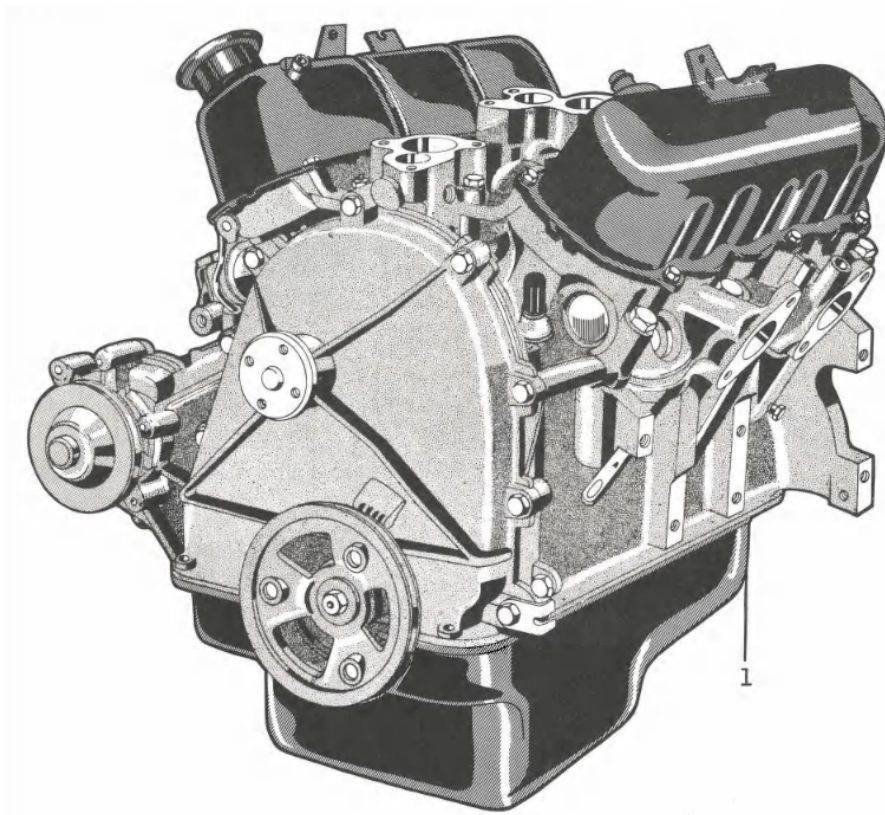




TAUNUS ENGINE

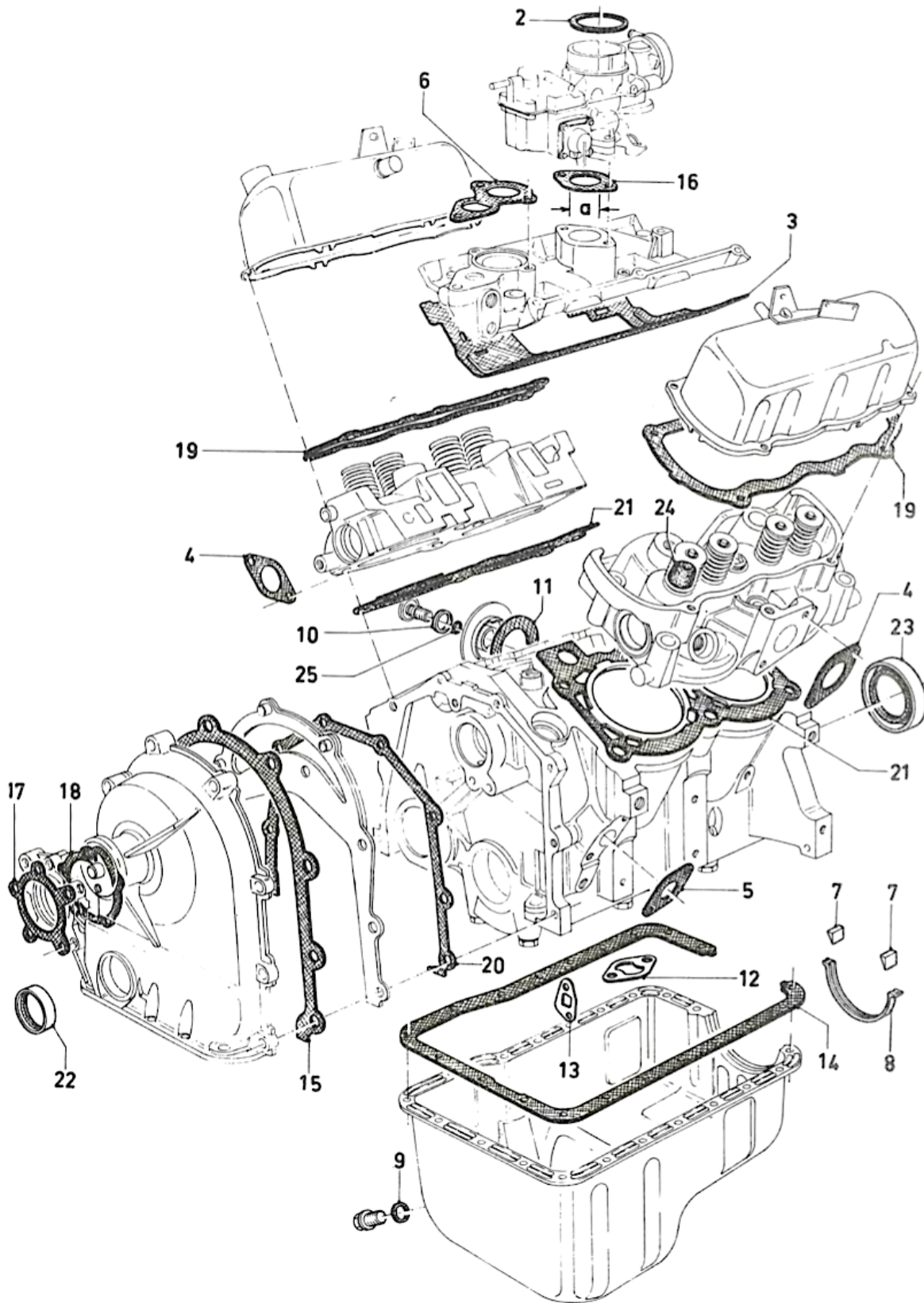
Exploded Illustrations

V4 model relevant to the Saab Sonett



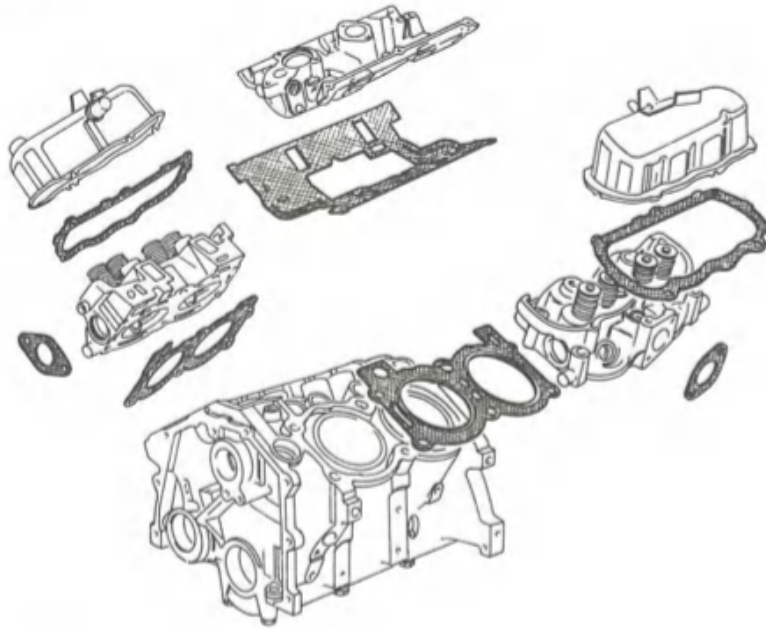
1] 122 CID six-cylinder engine (for illustration only; not installed in the Saab Sonett)

Gaskets V4



Gasket Kits V4

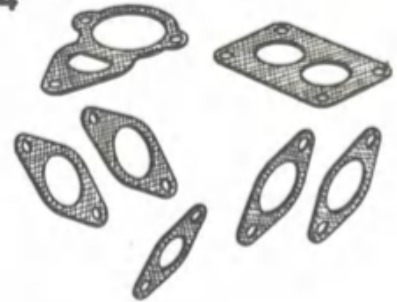
V4
71



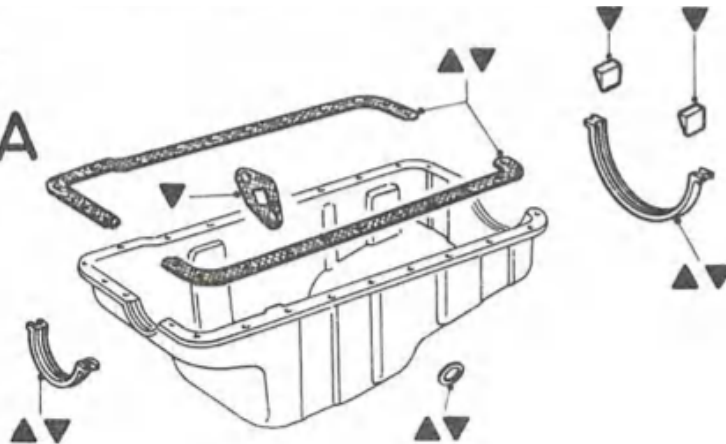
73



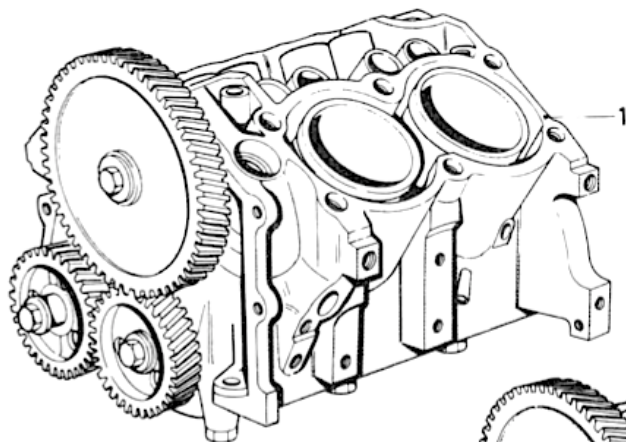
74



▲ 75
▼ 75A

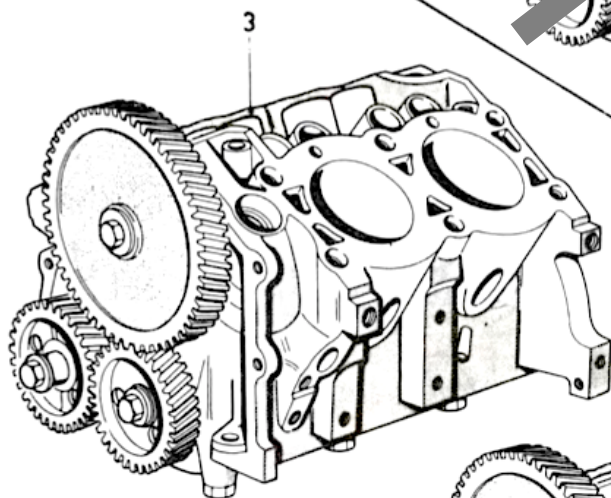
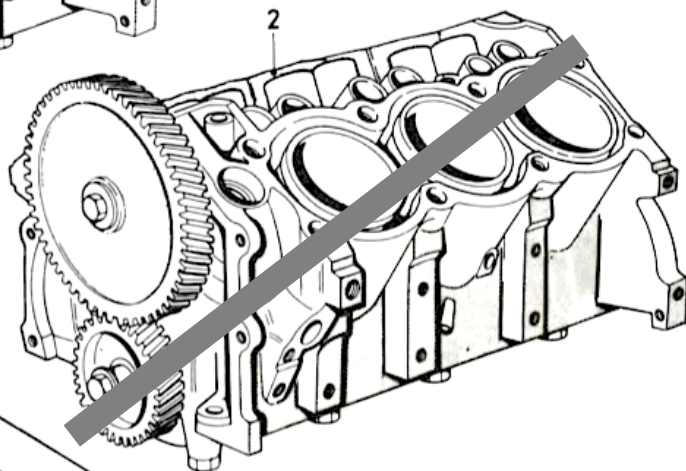


Cylinder Assembly V4 & V6



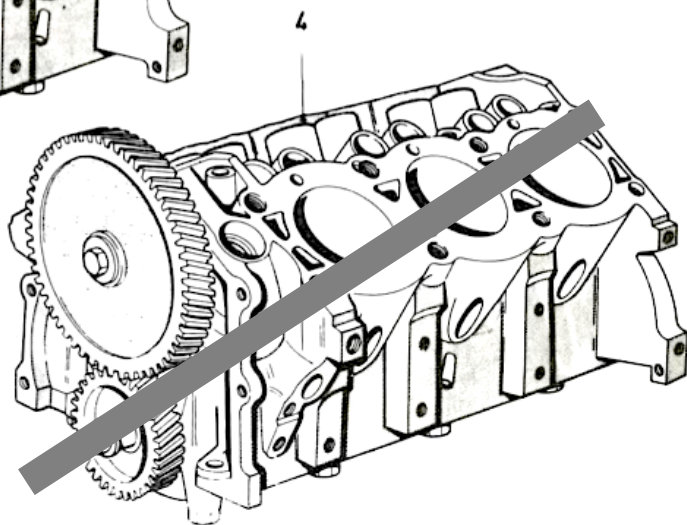
V4-08/62 → 11/67

V6-08/64 → 08/67



V4-11/67 →

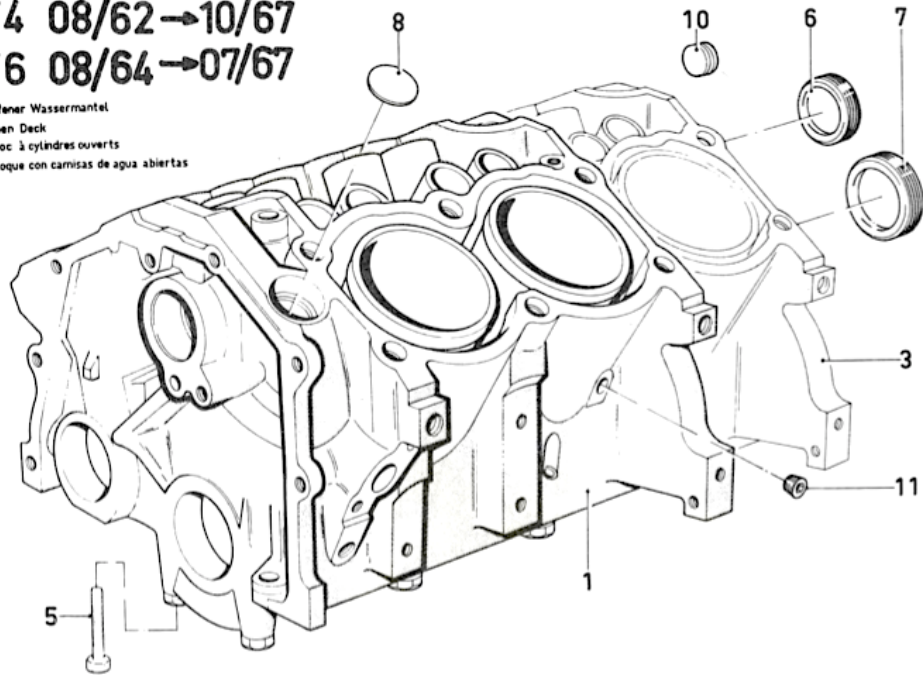
V6-08/67 →



Cylinder Block Plugs

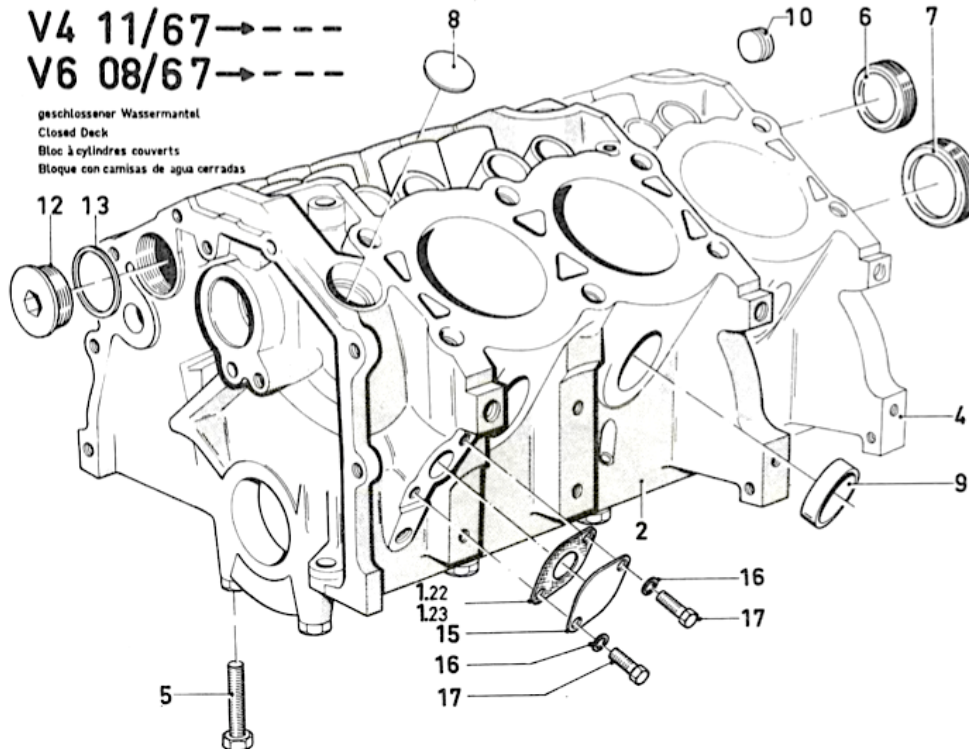
V4 08/62 → 10/67
 V6 08/64 → 07/67

offener Wassermantel
 Open Deck
 Bloc à cylindres ouverts
 Bloque con camisas de agua abiertas



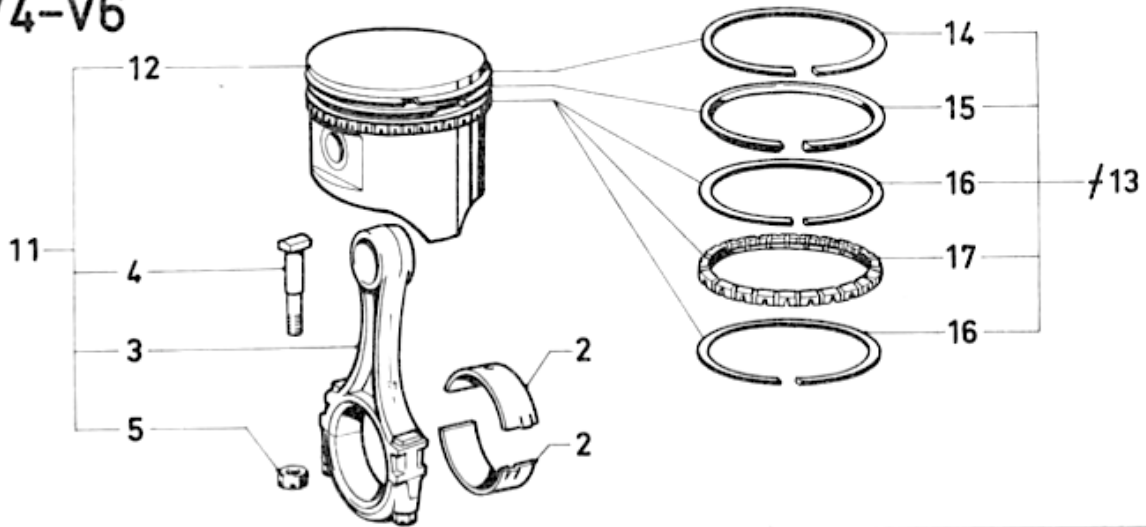
V4 11/67 → ---
 V6 08/67 → ---

geschlossener Wassermantel
 Closed Deck
 Bloc à cylindres couverts
 Bloque con camisas de agua cerradas

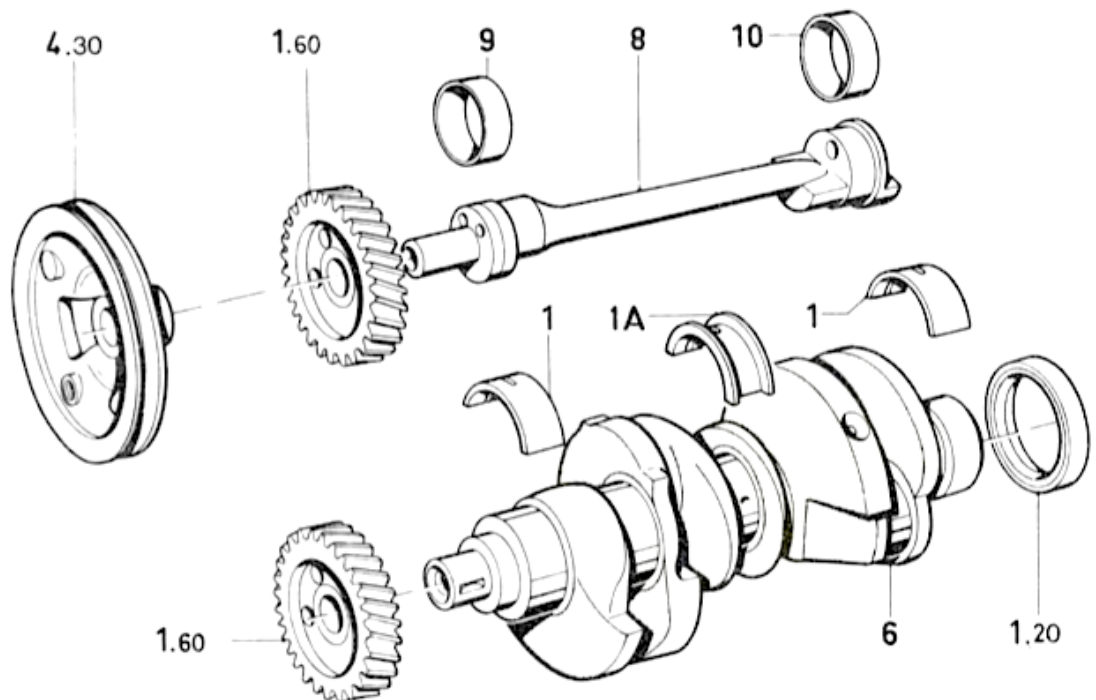


Crankshaft - Balance Shaft - Bearings - Piston

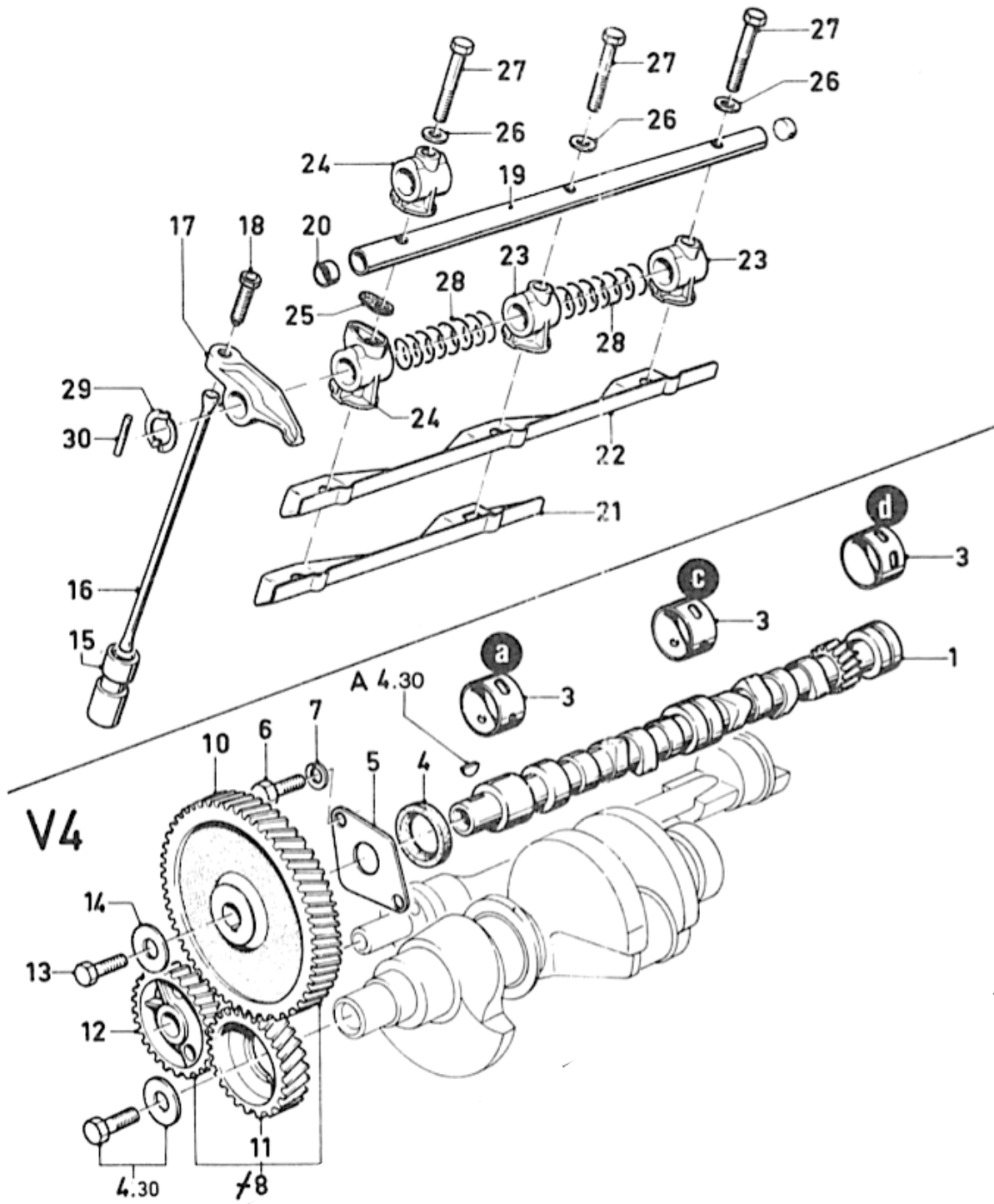
V4-V6



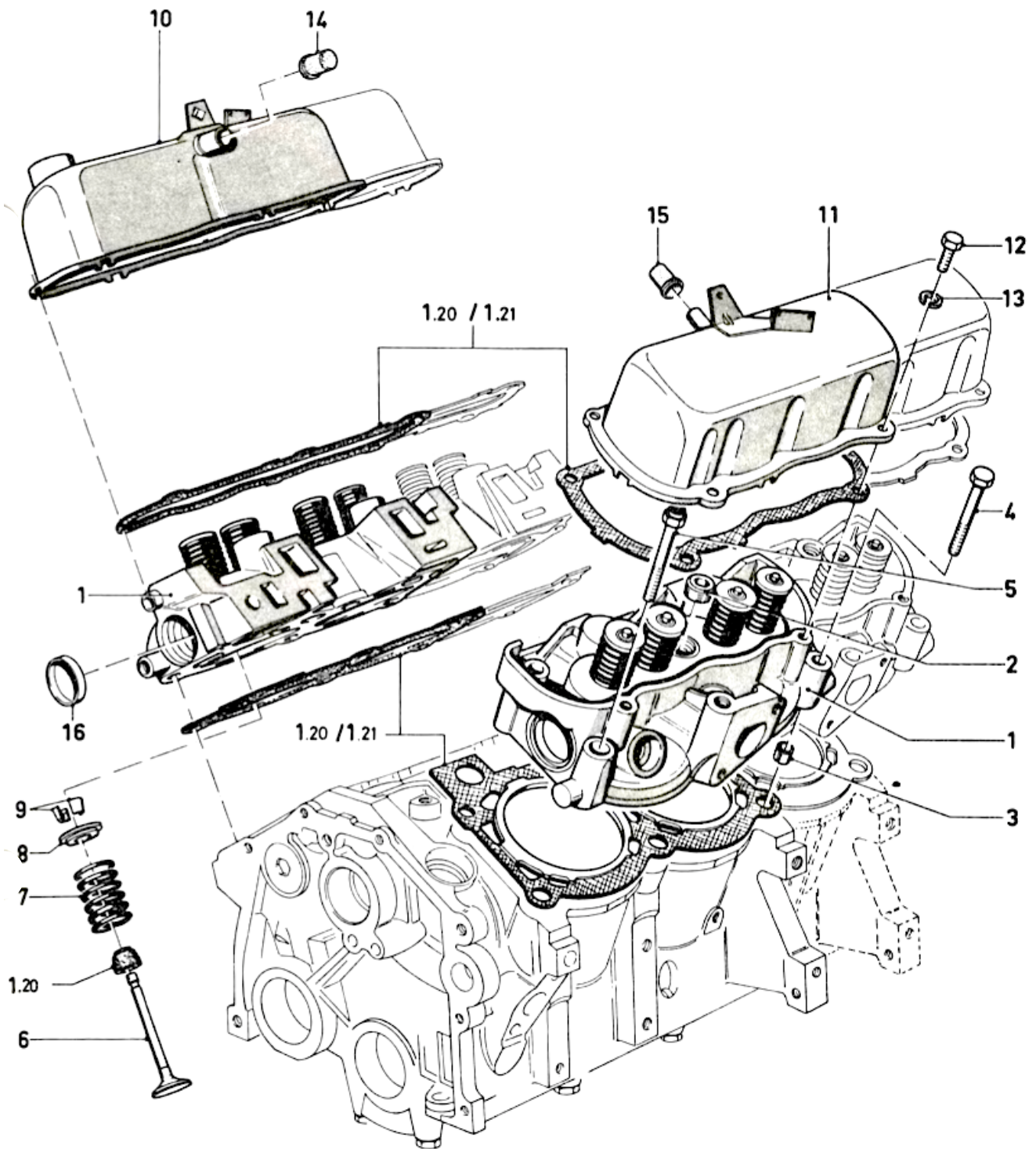
V4



Camshaft - Valve Control



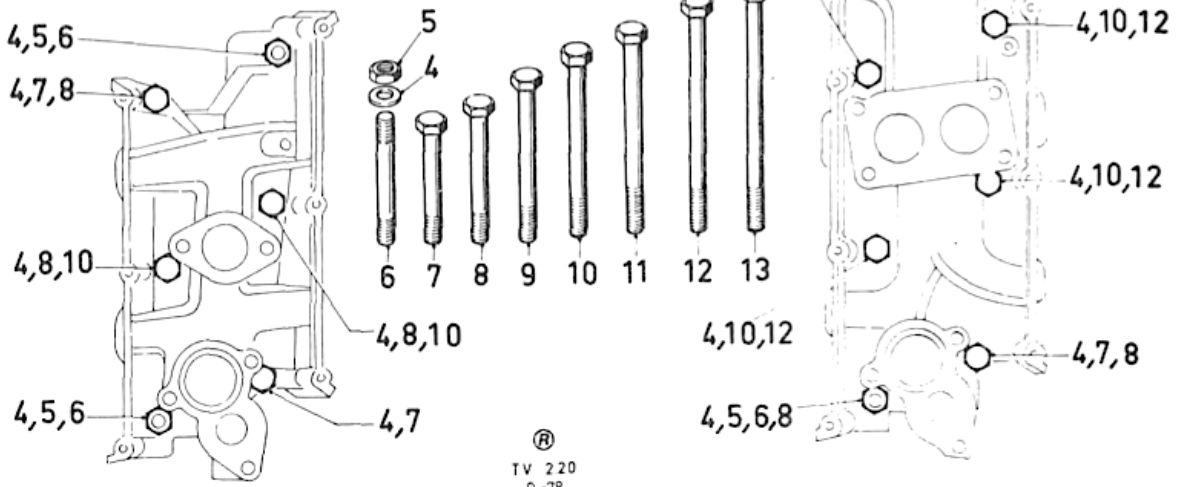
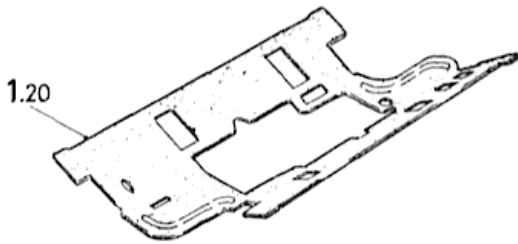
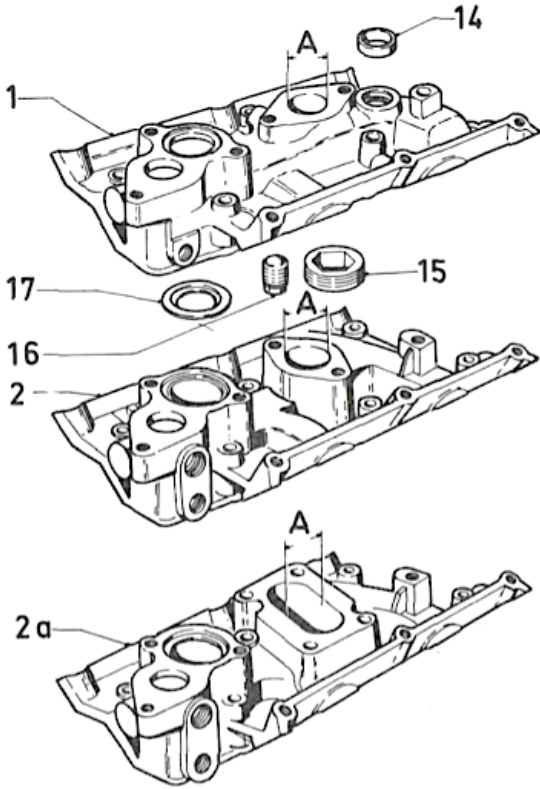
Cylinder Head - Valves - Rocker Arm Cover



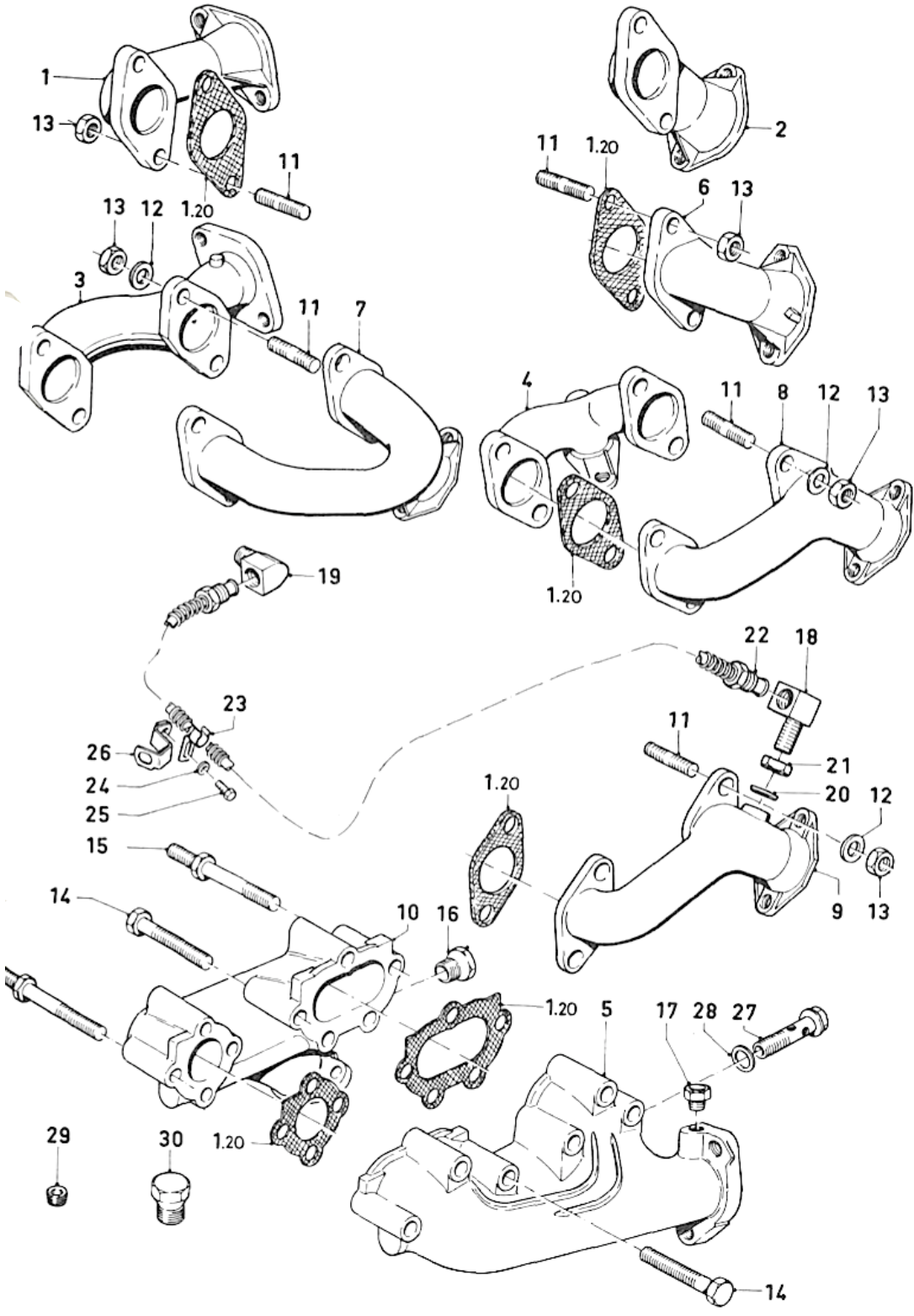
Note: V6 variation shown in dotted/greyed lines

Intake Manifold

V4



Exhaust Manifold



Oil Pump

